



- 30" automatic LEVERLESS tire changer
- Easy and precise locking system
- 2 laser pointers
- Unique tooling system
- Inverter solution
- Completely electromechanic
- Intuitive control panel
- Side lift

F16

EFFORTLESS & SIMPLE TIRE CHANGING

F16 AUTOMATIC LEVERLESS TIRE CHANGER

The new F16 is a 30" automatic leverless tire changer which guarantees a fast and effortless tire changing.

Intuitive with high level of technology, this equipment makes the job simple as you've never experienced. The machine recognizes the dimension of the wheel by placing two laser pointers.

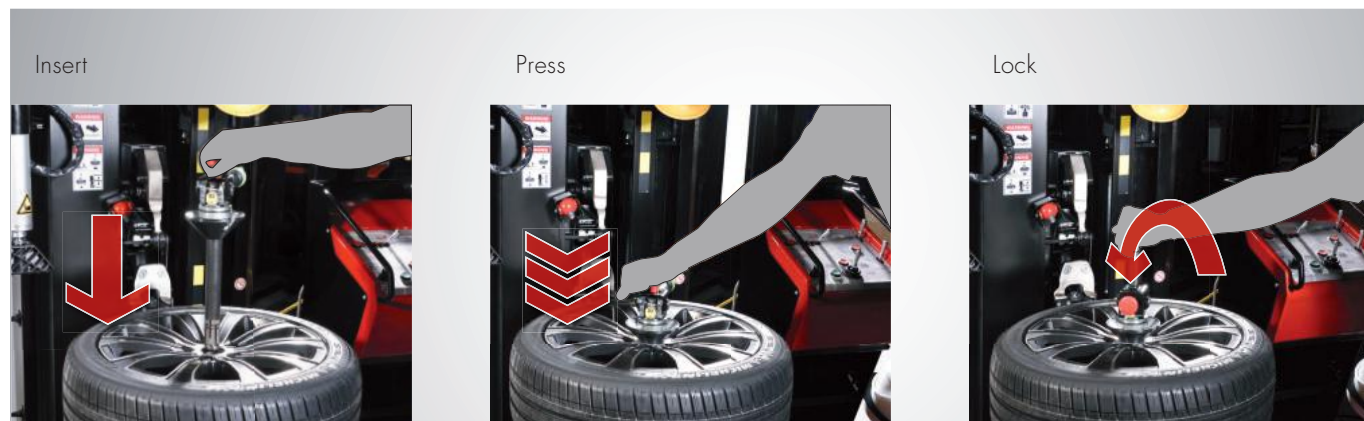
Completely electromechanic, all movements are driven by motor inverters to guarantee precision and reliability.



EASY AND EFFORTLESS

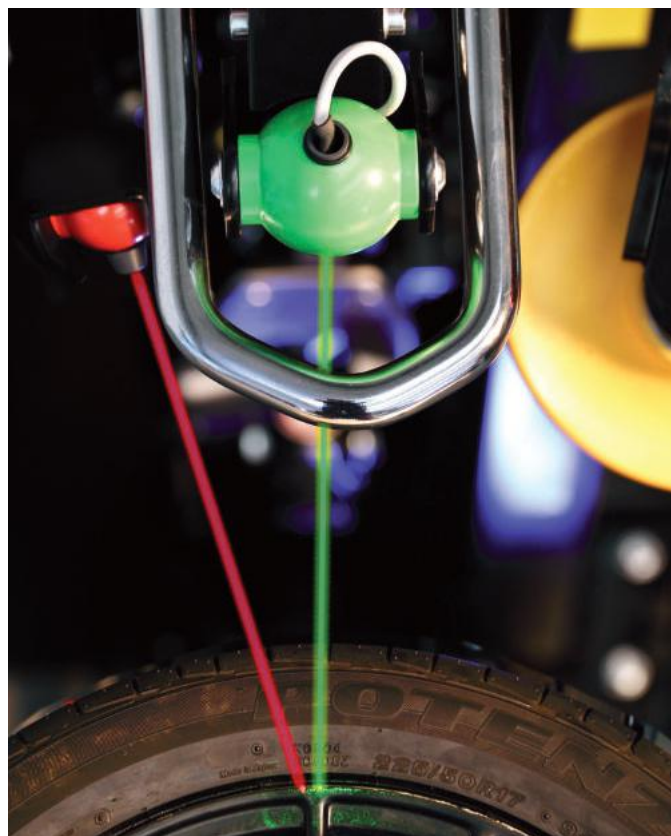
CENTER POST CLAMPING SYSTEM

- Easy and precise locking system
- Completely mechanical and easy maintainability
- Faster than any other automatic locking system
- Color code to identify the locking stage



WHEEL SET UP THROUGH TWO LASER POINTERS

- Intuitive color code system
- 2 independent set up buttons:
 - Green one to set wheel diameter
 - Red one to set the wheel width



BEAD BREAKER DISKS

- Double arm bead breaker system
- The strongest. Market benchmark
- Inverter technology
- Hump shape pre-set
- Folding structure to save the wheel



USER ORIENTED DESIGN

SIDE LIFT

- Lifting capacity up to 80 kg
- Allows to work always in an ergonomic position without stressing the back
- Improves productivity



CONTROL PANEL

Maximum user comfort in a single workstation which includes:

INFLATING CONTROL BOX

- Pressure gauge
- Air supply and oiler
- Inflating hose

CONTROL CONSOLE

Joysticks, buttons and switches in an intuitive layout that follows the tire changing procedure

PEDALS

- To control the rotation (motorinverter) and the inflating process



PERFORMANCE DETAILS

TOOLING SYSTEM

Keep your tire and wheel safe.

Leverless tire-bead extraction tool



Drive-in lower tire-bead tool

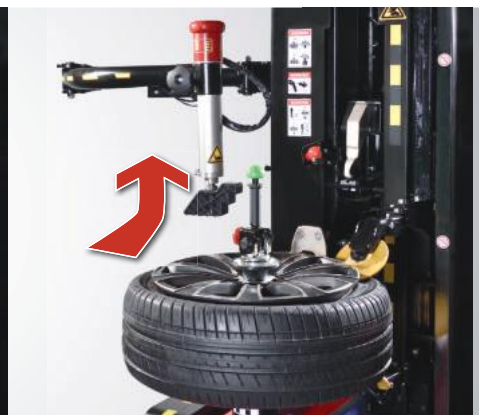
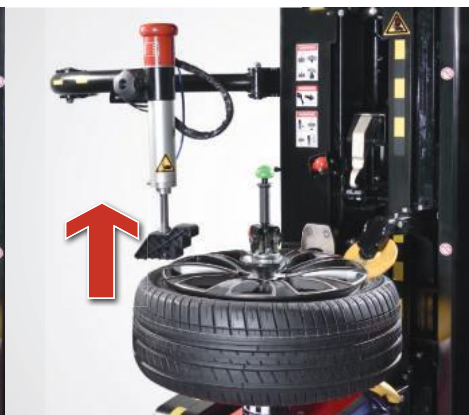


Assembly upper tire-bead tool



BEAD PRESSING ARM

- It supports the tire mounting
- It moves automatically in sleep mode



LED BAR & MIRROR:

- For a better view on the operation of the lower bead



TECHNICAL DATA

TECHNICAL SPECIFICATION	F16
Power supply	230 V 1ph 50 – 60 Hz
Air supply pressure	8 – 10 Bar
Rim diameter clamping	12" – 30"
Max. Wheel diameter	1,200 mm (47")
Wheel width	up to 16"
N. turntable speed	2 speed
Rotation speed	7 – 16 rpm
Bead breaking force	14,406 N
Bead breaking range	820 mm (32")
Lift capacity	80 Kg
Unit weight	600 Kg
Unit dimensions (WxDxH)	1.880 x 1.850 x 1.750 mm

SCOPE OF DELIVERY

- 1 x F16
- 2 x Centre locking protection
- 2 x Cones protection
- 2 x locking system pin protection
- 1 x Cone Ø70 mm
- 1 x Bead locking plier
- 3 x Rim protection kit
- 3 x Mounting tools protection
- 1 x Flange reduction
- 1 x Weight scraper
- 1 x Brush
- 1 x Grease pot holder

ACCESSORY



PN: 1 695 108 137

Blast inflating system



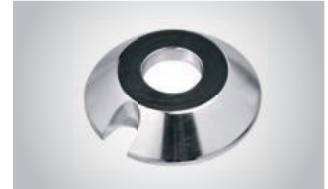
PN: 1 695 107 439

Wheel clamping adaptor kit for reverse mounted wheels



PN: 1 695 107 440

Light truck cone Ø 75 – 145 mm



PN: 1 695 107 441

Cone Ø 75 – 120 mm for steel rims



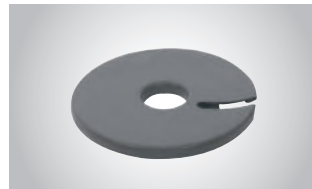
PN: 1 695 107 442

Light truck cone Ø 190 – 223 mm + spacer



PN: 1 695 103 302

Bead locking plier



PN: 1 695 107 444

Centre locking protection



PN: 1 695 000 289

Cone Ø 70 mm



PN: 1 695 108 136

Light truck cone Ø 110 – 190 mm + spacer



PN: 1 695 108 138

Cone Lamborghini



PN: 1 695 108 139

Cone Porsche



PN: 1 695 108 140

Cone BMW



PN: 1 695 108 196

Wheel clamping adaptor kit for clad wheels



PN: 1 695 108 195

Light truck kit: cones Ø120-190 mm / Ø190-223 mm + spacer



PN: 1 695 000 323

BMW centring flange

Sicam S.r.l. Società Unipersonale
A Bosch Group Company
Via G. Corradini | 42015 Correggio RE Italy
Tel. +39 0522 643-311 | Fax +39 0522 637-760
E-mail: sales@sicam.it | www.sicam.it